

CURRICULUM LETTER

Year 2 - Autumn 2



Ted Wragg TRUST

Exwick Heights Primary School

Exwick Lane, Exeter, EX4 2FB Telephone Number: 01392 209030

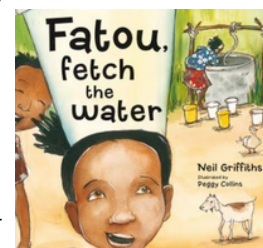
Website: <https://exwickheights.devon.sch.uk> Email: admin@exwickheights.devon.sch.uk

Tuesday 11th November 2025

Dear Parents / Carers of Exwick Heights Year 2 pupils,

In **English**, we will write our own version of the story 'Fatou fetch the water'. We will focus on saying and writing sentences that make sense, whilst building up our stamina for independent writing. We will also use the text 'How to Wash a Woolly Mammoth'. We will learn how to use imperative 'bossy' verbs and add time connectives such as first, next and then to structure our work. We will also have a go at adding subordinating conjunctions to Christmas instructions, using titles such as 'How to Decorate a Christmas Tree!'

Supporting learning at home: Please encourage your child to practise any new spellings set using 'Doodle Spell'. There will also be English tasks set through 'Doodle English'. Please provide opportunities for your child to practise their handwriting at home.

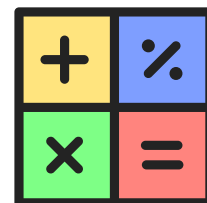


The children will also take part in three group **Reading** sessions a week, focusing on fluency (reading with good speed), prosody (expression) and comprehension (understanding). We will still be focusing on our Phase 5 sounds using the Little Wandle Phonics programme.

Supporting your child at home: Please continue to support your child by reading with them every day, particularly focusing on their Little Wandle book, which they should be able to read fluently. Please also support your child to complete Accelerated Reader quizzes on their library books at home. Regular reading will be rewarded with tickets in the 'Read to Succeed' draw, where they could win a book!

In **Maths**, we will be focusing on addition, subtraction, multiplication and division. We will use manipulatives (objects) and images to help us to add and subtract one and two digit numbers. We will develop the skills of doing this when crossing tens boundaries (e.g. 24+7 or 24+17) also. We will use and apply our knowledge of related facts (e.g. 2+4=6 and 4+2=6), understand fact families and how one fact will help us to know multiple facts.

Supporting your child at home: Please practice number bonds, particularly to and within 10 and 20 at home (e.g. 7+3=10, 9-7=2, 16-4=12). Please encourage your child to complete the activities set on 'Doodle Maths'. They are also able to access 'Doodle Tables' to complete independent practice.



In **Science**, we will be covering the topic 'Animals including humans'. We will notice that animals, including humans, have offspring which grow into adults and we will find out about and describe the basic needs of animals, including humans, for survival (water, food and air). We will also describe the importance for humans of exercise, eating the right amounts of different types of food and hygiene.

Supporting your child at home: You could discuss pets in your home, what they were like as babies and what they are like now? Keeping an exercise diary to record all the exercise you do could be something to try. Can you find out how much exercise you should be doing?

REACH THE HEIGHTS

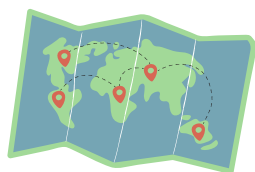
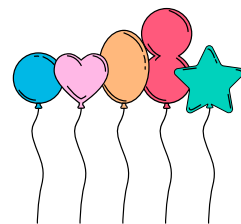


In our **outdoor Physical Education** sessions, we will be developing our tennis skills, practising our send and return skills. We will incorporate regular discussion on team work and playing collaboratively. In our **indoor PE** lessons, we will study dance! We will learn some choreographed steps to perform!

Supporting learning at home: Get out on your bike, scooter or roller skates! Physical activity is a great way to support both physical and mental health.

Our **PSHE** focus is **Celebrating Difference**, where the children will further explore the British values of tolerance and respect. Should there be rules about the different interests and hobbies that boys and girls can have? Absolutely not!!! We will enjoy discussing our own interests and hobbies and reminding ourselves that we can be whatever we want to be.

Supporting learning at home: You could discuss your child's different interests and interests that other family members have. It's okay to like different things!



We will be discovering '**Our Wonderful World**' in **Geography**. The four countries of the UK will be re-visited from Year 1 and we will learn all about the 7 continents that make up our planet. We will also be learning about different climates. Where is warm and where is cold and why? **Supporting learning at home:** You could discuss different places that you might have visited and find them on a map. Perhaps you could find out about a favourite animal and which continent you might find it on.

In our **Music** sessions, we will be continuing to develop our fabulous singing and performing skills, ready to entertain you with some festive songs as part of our 'Christmas celebration'. **Supporting learning at home:** You could help your child to learn the words to any songs which are sent home.



In **RE**, our focus is **Why do Christians Celebrate Christmas?** We will make sure that we know and can talk about all the elements of the Nativity story and will explore other areas such as advent, as well as discussing more abstract ideas such as 'incarnation'.

Supporting learning at home: When you are about and about, your child can look out for signs of Christmas and tell you why they are important to Christians.

In **Design and Technology**, we will be learning to Identify man-made and natural structures as well as Identify stable and unstable structural shapes. The children will produce a model that supports a teddy, using the appropriate materials and construction techniques and be able to explain how they made their model strong, stiff and stable.

Supporting learning at home: Your child might like to use some of the techniques they are learning in class to make another structure like a bridge or a tower which can support a toy!



Christmas here we come!

If you have any questions about your child's learning, please do not hesitate to speak to your child's teacher directly or email admin@exwickheights.devon.sch.uk. If you have any concerns or want to bring something to our attention, please don't hesitate to ask one of us.

Yours sincerely,

Mrs Sarah McDonald & Mrs Lianne Johnson
Wonder

Mr Graham Taylor
Mozart

Miss Prentice
Franklin