

CURRICULUM LETTER

Year 2 - Summer 2



Ted Wragg TRUST

Exwick Heights Primary School

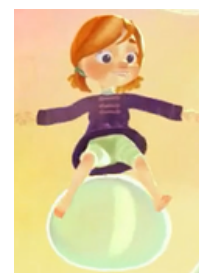
Exwick Lane, Exeter, EX4 2FB Telephone Number: 01392 209030

Website: <https://exwickheights.devon.sch.uk> Email: admin@exwickheights.devon.sch.uk

Tuesday 3rd June 2025

Dear Parents / Carers of Exwick Heights Year 2 pupils,

In **English**, we will be looking at the text 'Angelina Sprockett's Pockets' and using this to think of what might be in our made up pockets for different characters! Part of this work will include adjectives, questions, past and present tense and subordinating conjunctions. We will also used a short animation called 'Bubbles' to inspire the children to retell the story in their own words, showing us all the skills that they have learnt over Year 2.



Supporting learning at home: Encourage your child to write in clear, coherent sentences with letters on the line, finger spaces and correct letter formation.

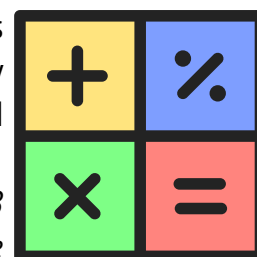
Our **Reading** sessions will focus on skimming and scanning, sequencing and true or false questions, in preparation for our KS1 SATs tests. We will also continue to read our class book every day.



Supporting learning at home: Please read with your child for 20 minutes a day and encourage them to regularly complete Accelerated Reader quizzes. Our aim is for every child to have reached 50,000 words by the end of the year. If you haven't already, please sign up to the Exeter Central or St Thomas library - there are brilliant events all throughout the summer!

The expectation in Year 2 is to read a book and complete an AR quiz at least once each week.

In **Maths**, we will finish the year by covering time, statistics and position and direction. Using an analogue clock, children will learn about quarter past and quarter to as well as telling time to 5 minute intervals. They will interpret and construct simple pictograms, tally charts, block diagrams and tables and answer questions about the given data. Children will also use mathematical language to describe position and direction.



Supporting learning at home: Please make sure that your child is accessing SPARX at least 3 times a week. Sumdog is another great maths website that your child can use at home too. There are also games uploaded onto Google Classroom which support the topics we are focusing on in class.



In **Science**, we will be continuing our learning about al Year 2 topic '**Living Things and their Habitats**' where we will identify and name a variety of plants and animals in their habitats, including microhabitats. We will also learn about food chains and classify things that are alive, dead or have never been alive.

Supporting learning at home: Have a look in the garden or park for minibeasts. Can your child describe the microhabitat that they live in?

REACH THE HEIGHTS

We will be finding out about **'Our World, Our Food'** in Geography! We will learn about how and where our food comes from, the importance of farming and begin to understand why reducing food waste helps our planet.



Supporting learning at home: Look at food labels at home to find out where the food has come from. How many different countries can you find? What is the biggest and smallest distance the food has travelled?



In our **Physical Education** sessions, we will be working on our running, jumping and throwing skills in preparation for sports day! We will also be practising our send and return skills, using various equipment whilst honing our hand eye coordination.

Supporting learning at home: Please do encourage your child to be active outside school too! Physical activity is known to have great benefits for both our physical and mental health.

Our **PSHE** focus for the first part of the term is **Changing Me**, where we will think about life cycles in nature and growing from young to old. We will think about how our bodies have changed since babies and learn the correct terminology for body parts. Children will also think about the transition to their new class and Key Stage 2 and how they feel.



Supporting learning at home: Encourage your child to talk to you about how they are feeling about the move to Key Stage 2. It's okay to feel nervous about new things!



In **RE**, our focus is **'Sacred Places?'** We will investigate special places where people go to worship and what people do in the special places. We will learn about objects used in worship and look at examples of stories, objects, symbols and actions used in churches, mosques and/or synagogues which show what people believe.

Supporting learning at home: When you are passing a place of worship, can your child notice any symbols from their learning?

In our **MUSIC** sessions, we will be continuing to explore the 7 interrelated dimensions of music, focusing particularly on pitch, tempo and rhythm, whilst learning about different instruments of the orchestra. We will enjoy listening to a range of pieces from a mix of Western and non-Western musical styles and will use both tuned and untuned percussion instruments to enjoy playing in an ensemble or 'Class Band' altogether. We are also hoping to be able to hire a class set of violins for this term, as a short taster to this lovely instrument! I'm sure you will hear us before you see us!



Supporting learning at home: Enjoy listening to lots of different pieces of music with your child. Find a clip of 'Peter and the Wolf' or 'The Young Person's Guide to the Orchestra' on Youtube to find out more about different types of orchestral instruments and the sounds that they make.



In our **DT** sessions, we will be link up with our English text, Angelica Sprockett's Pockets, and make our own pouch/pocket. We will design, sew and create a pouch which will meet a design brief. We will also evaluate our pockets as part of the design process.

Supporting learning at home: Could your child have a go at some sewing at home under supervision and practice their running stitch? Hobby craft and other craft shops also have kits to try if your child is really enthusiastic!

We hope you are ready for our final half term of Year 2!

If you have any questions about your child's learning, please do not hesitate to speak to your child's teacher directly or email admin@exwickheights.devon.sch.uk.

Yours sincerely,

Mrs S. McDonald + Miss Emily Williscroft
Wonder

Mr Graham Taylor
Mozart