

# CURRICULUM LETTER

Year 4 - Summer 2



Ted Wragg TRUST

## Exwick Heights Primary School

Exwick Lane, Exeter, EX4 2FB Telephone Number: 01392 209030

Website: <https://exwickheights.devon.sch.uk> Email: [admin@exwickheights.devon.sch.uk](mailto:admin@exwickheights.devon.sch.uk)

Wednesday 3rd June 2026

Dear Parents / Carers of Exwick Heights Year 4 pupils,

This half term in **English**, we will be focusing on the narrative text *Blue John* by Berlie Doherty to consolidate our knowledge on Year 4 grammar, spelling and punctuation. We will also be writing pieces based on our new geography topic Natural Resources.



**Supporting learning at home:** please encourage your child to practise any new spellings set using 'Doodle Spell'. There will also be English tasks set through 'Doodle English'. Please provide opportunities for your child to practise their handwriting at home.



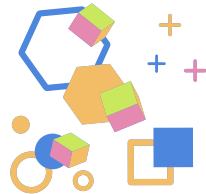
**Reading** themes this half term will include natural resources, classic texts and performance poems. We encourage children to read widely at home and explore different genres whilst developing their expression by reading to family members.



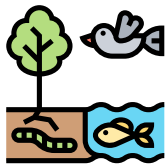
**Supporting learning at home:** the benefits of reading cannot be underestimated. Please ensure that you share a love of reading with your child and encourage them to read daily. As always, do encourage your child to read a range of books, both fiction and non-fiction. Year 4 children should read at home for a minimum of 20 minutes a day and, for each book your child reads, they can complete an Accelerated Reader quiz to earn points - eventually becoming a Word Millionaire and more!



In **maths**, we will be learning about shape, statistics, position and direction. All Year 4 children are expected to know all of their times tables now and will be formally assessed on them at the beginning of June. Thank you for your support in preparing your child for this.



**Supporting learning at home:** please encourage your child to complete the activities set on 'Doodle Maths'. They are also able to access 'Doodle Tables' to complete independent practice.



In **science**, we will be continuing our learning on **Living Things and their Habitats**. We will be focusing on food changes, habitat changes and the impact humans are having on the environment.

**Supporting learning at home:** encourage your child to explore local habitats of minibeasts, birds and mammals.

We will be studying **Natural Resources** in **geography**; the children will learn about where natural resources come from in the world and what they can be used for. We will explore both the advantages and disadvantages of these, as well as the changing impact on our world.



**Supporting learning at home:** identify objects around the home which have been created using natural resources.



In **DT**, we will be making torches. We will be applying our circuit skills from science to create a simple electronic circuit and building a torch casing for it.

**Supporting learning at home:** discuss how torches work and their different components.

REACH THE HEIGHTS



In **PE**, we will be learning how to play **basketball and tennis!** We will be learning the basic skills of these sports and gradually building up to playing matches in teams.

**Supporting learning at home:** *fitness can be supported by walking, scootering or cycling to school.*

Our **PSHE** focus is '**Changing Me**' where the children will be learning about how people change as they get older. We will learn about how to accept and understand change. We will provide the children with a safe space to ask any questions they have about changes in their lives.



**Supporting learning at home:** *encourage children to speak to a trusted adult about any questions they may have at this time.*

In **wellbeing**, we will continue to recognise, name and understand a range of emotions in a safe and supportive environment. We will continue to learn that all feelings are valid and develop strategies to manage emotions in healthy ways. We will be encouraging children to build self-awareness, resilience and empathy, helping them to communicate confidently.



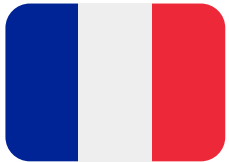
In **RE**, our question will be 'How and why do people mark the significant events of life?' We will be exploring how both religious and non religious people mark significant events and how religion may affect these choices around the world.

**Supporting learning at home:** *talk to your child about celebrations and other events they have experienced through their life.*

In **Music**, we will be enjoying Samba playing! The children will enjoy playing a range of percussion instruments, focusing on rhythm and performance. We will learn what a syncopated rhythm is and learn how to play using it.



**Supporting learning at home:** *encourage your child to sing or play instruments at home.*



In **French**, we will be focusing on **sports**. We will be learn lots of new vocabulary so we can discuss our favourite sporting activities, talk about what we don't enjoy so much, as well as the places we go to practise these. We will take a close look at tennis and even discuss Wimbledon in French!

**Supporting learning at home:** *there are some excellent resources on BBC Bitesize to support French learning including games and the TV show 'Muzzy'.*

**Home Learning:** all 'core' home learning and reading records will be checked on a Friday with time scheduled in the day to share and celebrate any 'Curiosity' tasks completed.

If you have any questions about your child's learning, please do not hesitate to speak to your child's teacher directly or email [admin@exwickheights.devon.sch.uk](mailto:admin@exwickheights.devon.sch.uk); your query will be passed to them. If you have any concerns or want to bring something to our attention, please do contact the Year Group Lead - Mrs Lloyd-Seetim.

Yours sincerely,

Mrs F. Lloyd-Seetim  
Rashford

Ms C. Willett & Mrs S Davies  
Rapinoe